

WALINGA[®]
INC.



PNEUMATIC
CONVEYING
SYSTEMS



WALINGA
INC.

TOUGH TO BEAT IN THE LONG RUN

WALINGA.COM TOUGH TO BEAT IN THE LONG RUN

The only system you'll ever need. Gives one person total grain-handling capability! Do it all with the Walinga Agri-Vac. Fill or empty any storage facility being used.

The Walinga Agri-Vac puts an end to legs, augers, sweeps and shovels. Grain handling has never been simpler, safer or healthier. Just couple the Agri-Vac to your tractor and drive into position. Lightweight vacuum/pressure hoses attach in seconds and flex easily. Suddenly even tight spots and awkward angles are no problem!

TRANSPORTATION



PNEUMATIC CONVEYING SYSTEMS



MACHINING



Walinga builds solutions for most of your grain-handling needs. Visit our website to see more on our truck and vac systems!

WALINGA.COM



THE ONLY SYSTEM YOU'LL EVER NEED. GIVES ONE PERSON TOTAL GRAIN-HANDLING CAPABILITY!

Do it all with the Walinga Agri-Vac. Fill or empty your storage facilities. The Walinga Agri-Vac puts an end to legs, augers, sweeps and shovels. Grain handling has never been simpler, safer and healthier. Just couple the Agri-Vac to your tractor and drive into position. Lightweight vacuum/pressure hoses attach in seconds and flex easily, making tight spots easy to clean.

- NO SHOVELING
- REMOVES DUST WITH GRAIN
- EASY-HANDLING
- HOSE REACHES INTO CORNERS
- VACUUM ACTION SUCKS UP GRAIN
- SAVES YOUR LUNGS!

THE AGRI-VAC MAINTAINS EXCELLENT GRAIN QUALITY THANKS TO THE LARGE DROP THRU/ BLOW THRU AIRLOCK

Inlet and outlet ports have special flow contours that maximize capacity. A rotor wiper levels pockets to prevent grain damage. The 10-vane fabricated steel rotor has adjustable hardox steel tips to increase airlock life. Pressure protected airlock motor is reversible so you can easily remove foreign objects.

TOP VERSATILITY! WALINGA AGRI-VAC PUTS YOU CLEANLY IN CONTROL

Check these performance highlights: Truck loading boom rotates manually or hydraulically, and raises or lowers to suit truck height. Grain bin 'hot spots' are easy to remove. Light-weight cleanup hose makes for easy vacuum clean out, including seed drills, grain bins, flat storage piles and/or buildings.

CYCLONIC ACTION HELPS PRE-CLEAN THE AIR & ASSURES OPTIMUM AIR FLOW

The Agri-Vac's cone shaped receiver is designed for minimal resistance to material and airflow. Grain and air are separated in the receiver. Material flows into the rotary airlock and the air moves on to the blower, which then pushes material out of the airlock into the bin or truck. No filters or screens to cause plug-ups or freeze-ups.

LOTS OF LOADING OPTIONS

Loading/Unloading tubes can be permanently installed in your grain bins and connected with your piping system. You just move the Agri-Vac from site to site. Push grain hundreds of feet. Pull out every last bit of grain with the flexible hose and clean-up nozzle.



HOW IT WORKS

The Walinga Agri-Vac is designed for maximum performance due to its engineered efficiency. A minimum of resistance to material and airflow is achieved as a result of this design. The material (grain) is drawn to the conical receiver which creates cyclonic action, thus acting as a Pre-Cleaner. The grain and the air are separated in the receiver, the material flows into the rotary airlock and the air moves on to the blower which in turn pushes the material back out of the rotary airlock into the truck or bin pipe. In addition, Walinga's Secondary Pre-Cleaner (standard on most models) filters the air for a second time, resulting in an extended life of the unit.

WALINGA SRT BLOWER

You already know pneumatic conveying systems move bulk product on a cushion of air. Walinga SRT blowers create the pressure that drives that work. Examining every facet of a blower's construction, Walinga engineers realized that by altering the structural design of a standard blower casing they could lower the amount of sound produced.

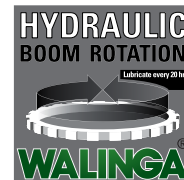
Heavy-duty equipment makes noise, everyone knows that, but reducing sound production actually transfers otherwise lost energy back into the moving parts. Less vibration means less wear, less mechanical stress, better performance and a lot less noise.

THE UNIQUE DROP THRU/BLOW THRU AIRLOCK

Walinga's airlock is designed for maximum performance and minimal grain damage. The housing is precision machined from a cast shell for unequalled performance. The 10-vane fabricated steel rotor has adjustable hardox tips for longer life and the inlet and outlet ports have a special flow contour for maximum capacity. To prevent grain damage, a special rotor wiper levels the pockets. The airlock is driven by a pressure protected, variable speed, hydraulic motor that is reversible so you can easily remove foreign objects which might be in your grain.

1 Heavy Duty Discharge Cyclone

2 Easy to Reach truck loading kit has hydraulic lift for easy positioning



3 Secondary Pre-Cleaner extends life of unit

Walinga's dust separator (Pre-Cleaner) device greatly reduces premature wear of the blower because most grains create dust-laden air. Our Pre-Cleaner does not use filters which plug or freeze. Minimal maintenance is easy and fast. The dust simply needs to be dumped out of the Pre-Cleaner. Product quality is maintained, in fact may be improved as the result of a natural cleaning action during transfer.

4 Fast and easy hose connections with convenient inlet positions



RHINO HYDE PROTECTION

Walinga protects wear susceptible areas utilizing Rhino Hydres' tough, resilient elastomeric urethanes specifically designed for use in applications requiring abrasion resistance.

5 Heavy duty frame and fenders

6 Heavy duty steel elbow at airlock discharge connects to flexible piping for adjustable height truck loading kit

CORVOR HARD COATINGS

Walinga's proprietary Corvor hard coating ensures blower longevity.

7 Walinga SRT Blower



LEADERS IN PNEUMATIC CONVEYING SYSTEMS

Walinga products are ripe with innovative solutions. When you engage with Walinga, your relationship extends beyond the simple purchase of a Walinga product. Walinga not only listens to their customers, they engage in conversation.

Did you know that many standard features start out as customer initiated design projects? Throughout the year Walinga engineers review and collect customer feedback. Sometimes customers only

suggest an opportunity for improvement, some might offer the bones of a solution and occasionally one will go as far as sharing something specific they've fabricated for themselves. Each year Walinga engineers build a full size working prototype incorporating the best of these ideas and annually invite customers to come play with it. Changes might be made, some features may not prove worthy, but ideas that work will become standard production items.



SUCTION NOZZLE

FLOOR SWEEP NOZZLE



EMPTYING A
PRE-CLEANER



Manufacturing at Walinga's Fergus, Ontario plant utilizes an overhead rail assembly line. Shown here, Agri-Vac parts have completed finishing and are en route to final assembly.

HIGH PERFORMANCE PNEUMATIC GRAIN MOVING UNITS

A MODEL FOR EVERY NEED MAXIMUM LOADING CAPABILITIES

Agri-Vac

LOW-MID RANGE PORTABLE CLEAN-UP

*CAPACITIES:

3510E (20hp)
650 Bu/Hr (17+ Tonnes/Hr)

3510G (26.57hp EFI)
700 Bu/Hr (18 Tonnes/Hr)

3510 3PH
650 Bu/Hr (17+ Tonnes/Hr)

*Capacities based on Corn & using a 12' (3.65 m) long suction line and 12' (3.65m) long discharge line.

Barometric pressure, humidity, and condition of product will affect capacity.

Some items shown may be optional.

Agri-Vac

MID-HIGH CAPACITY PTO POWERED

*CAPACITIES:

5614 PC & 5614 DLX
2500 Bu/Hr (64 Tonnes/Hr)

6614 PC & 6614 DLX
3600 Bu/Hr (92 Tonnes/Hr)

7614 PC & 7614 DLX
5000 Bu/Hr (127 Tonnes/Hr)

*Capacities based on Corn & using a 12' (3.65 m) suction line and truck loading kit.

Barometric pressure, humidity, and condition of product will affect capacity.

Some items shown may be optional.

Agri-Vac

HIGH CAPACITY PTO POWERED

*CAPACITIES:

7816 DLX
5500 Bu/Hr (140 Tonnes/Hr)

8816 DLX
7000 Bu/Hr (178 Tonnes/Hr)

*Capacities based on Corn & using a 12' (3.65 m) suction line and truck loading kit.

Barometric pressure, humidity, and condition of product will affect capacity.

Some items shown may be optional.

3510E

3510G

3510 3PH



Electric



Gas Powered



ONE PIECE UNIT



*CAPACITIES:

4510 UV10 500 Bu/Hr (13.3 Tonnes/Hr)

4510 UV15 650 Bu/Hr (17.5 Tonnes/Hr)

4510 UV20 800 Bu/Hr (21.0 Tonnes/Hr)

*Capacities based on moving dry corn approximately 100' (30.4m). Barometric pressure, humidity, and condition of product will affect capacity. Some items shown may be optional.

AIRLOCK PACKAGE



BLOWER PACKAGE



MID-HIGH CAPACITY STATIONARY UNIT

*CAPACITIES:

4510 UV10 500 Bu/Hr (13.3 Tonnes/Hr)

4510 UV20 800 Bu/Hr (21.0 Tonnes/Hr)

5510 UV30 1100 Bu/Hr (29.3 Tonnes/Hr)

5614 UV40 1300 Bu/Hr (34.7 Tonnes/Hr)

5614 UV50 1500 Bu/Hr (40.0 Tonnes/Hr)

6614 UV60 1800 Bu/Hr (48.0 Tonnes/Hr)

6614 UV75 2100 Bu/Hr (56.0 Tonnes/Hr)

*Capacities based on moving dry corn approximately 100' (30.4m). Barometric pressure, humidity, and condition of product will affect capacity. Some items shown may be optional.

Ultra-Vac

SELF-CONTAINED HIGH CAPACITY DIESEL POWERED

4510G

5614D

6614D



*CAPACITY:

4510G up to 800 Bu/Hr (up to 20.32 Tonnes/Hr)

*Barometric pressure, humidity, and condition of product will affect capacity. Some items shown may be optional.



*CAPACITY:

5614D 2500 Bu/Hr (64+ Tonnes/Hr)

*Capacities based on Corn & using a 12' (3.65m) suction line and truck loading kit. Barometric pressure, humidity, and condition of product will affect capacity. Some items shown may be optional.



*CAPACITY:

6614D 3600 Bu/Hr (92 Tonnes/Hr)

*Capacities based on Corn & using a 12' (3.65m) suction line and truck loading kit. Barometric pressure, humidity, and condition of product will affect capacity. Some items shown may be optional.

7614D

7816D

8816D

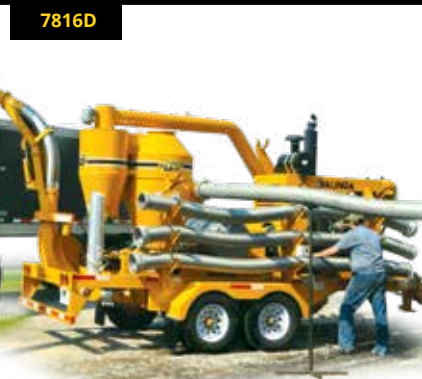
Ultra-Vac



*CAPACITY:

7614D 5000 Bu/Hr (127 Tonnes/Hr)

*Capacities based on Corn & using a 12' (3.65m) suction line and truck loading kit. Barometric pressure, humidity, and condition of product will affect capacity. Some items shown may be optional.



*CAPACITY:

7816D 5500 Bu/Hr (140 Tonnes/Hr)

*Capacities based on Corn & using a 12' (3.65m) suction line and truck loading kit. Barometric pressure, humidity, and condition of product will affect capacity. Some items shown may be optional.



*CAPACITY:

8816D 7000 Bu/Hr (178 Tonnes/Hr)

*Capacities based on Corn & using a 12' (3.65m) suction line and truck loading kit. Barometric pressure, humidity, and condition of product will affect capacity. Some items shown may be optional.

WALINGA®

HIGH PERFORMANCE PNEUMATIC GRAIN MOVING UNITS



Agri-Vac

Walinga products represent the best in manufacturing excellence. Our in-house engineering and design teams utilize the most current computer technology available. State-of-the-art manufacturing equipment, combined with over 60 years of experience, ensures that our customers receive unsurpassed quality.

Walinga adheres to one clear and simple mandate:

the customer must be completely satisfied.

From initial contact, to delivery, to future service - we guarantee accessibility, professional expertise and meticulous attention to detail. There are no "small" projects at Walinga. Each customer is given the full attention of our seasoned team. A comprehensive network of distributors, dealers and agents ensures that a company representative is available at any time and virtually anywhere throughout Canada, the United States, South America, Europe, Australia, and Asia.

Custom-built aluminum feed bodies and trailers, pneumatic conveying systems, central vac systems, aluminum and steel dump bodies, rendering and recycling units each built according to exacting standards. Every stage of the manufacturing process from design to completion is performed by Walinga. The result—a cost effective, durable product line that responds to any challenge with premium performance.



Ultra-Vac

WALINGA.COM

Head Office

R.R. #5,
Guelph, Ontario
Canada N1H 6J2
Tel: 519.824.8520
Tel: 888.925.4642
Fax: 519.824.5651

Michigan

1190 Electric Ave.
Wayland, Michigan
USA 49348
Tel: 616.877.3470
Tel: 800.466.1197
Fax: 616.877.3474

Manitoba

70 3rd Ave. N.E.
Box 1790
Carman, Manitoba
Canada R0G 0J0
Tel: 204.745.2951
Fax: 204.745.6309

Ontario

938 Glengarry Cres.
Fergus, Ontario
Canada N1M 2W6
Tel: 519.787.VACS (8227)
Fax: 519.787.8210

Australia

Customvac Australia
24 Molloy St.
Toowoomba Qld 4350
Australia
Tel: 1800 242 699

